

Summary: Select Sex-Based Health Effects



FEMALE ASTRONAUT



Women suffer less from hearing loss with advancing age, and do not display a bias towards loss of hearing in the left ear



Female astronauts, (to date) do not exhibit clinically significant visual impairment



Women demonstrate a slight bias towards accuracy versus speed in response to an alertness test



Female astronauts are more susceptible to orthostatic intolerance



Urinary tract infections are more common in female astronauts



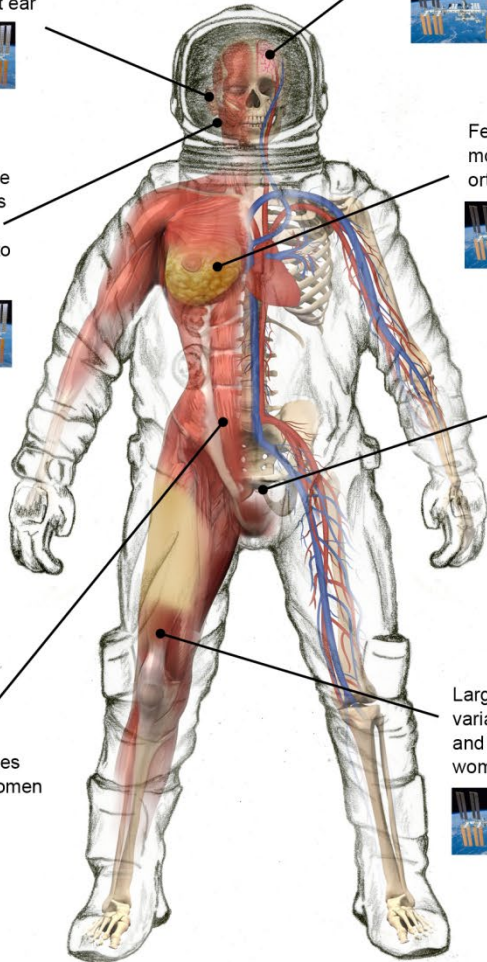
Women mount more potent immune responses



Struvite kidney stones more common in women



Large individual variability to muscle and bone loss in women



MALE ASTRONAUT



Men suffer more from hearing loss with advancing age, and display a bias towards loss of hearing in the left ear



Some male astronauts exhibit clinically significant visual impairment



Men demonstrate a slight bias towards speed versus accuracy in response to an alertness test



Male astronauts less susceptible to orthostatic intolerance



Urinary tract infections less common in male astronauts



Men mount less potent immune responses



Calcium oxalate kidney stones more common in men



Large individual variability to muscle and bone loss in men

